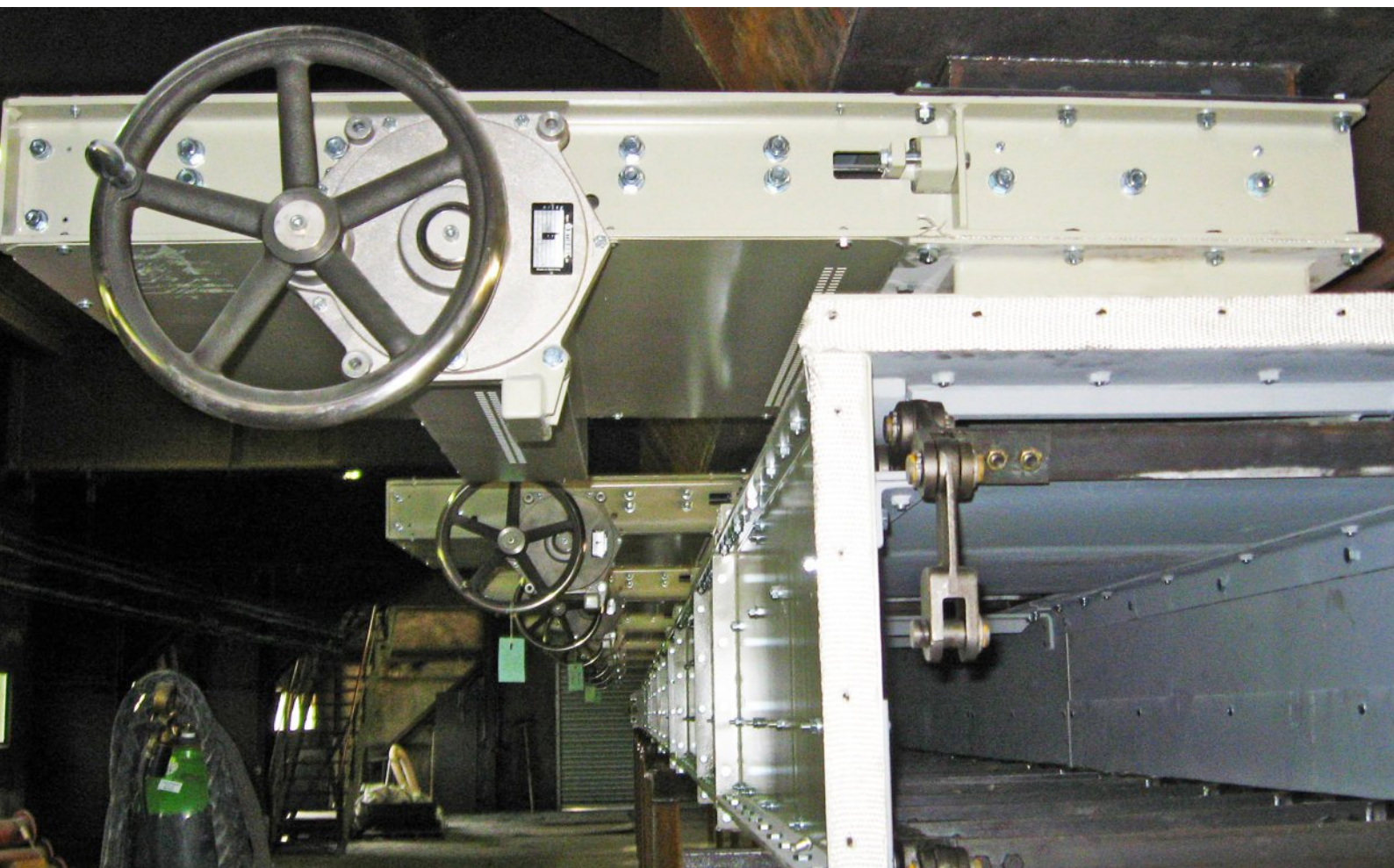
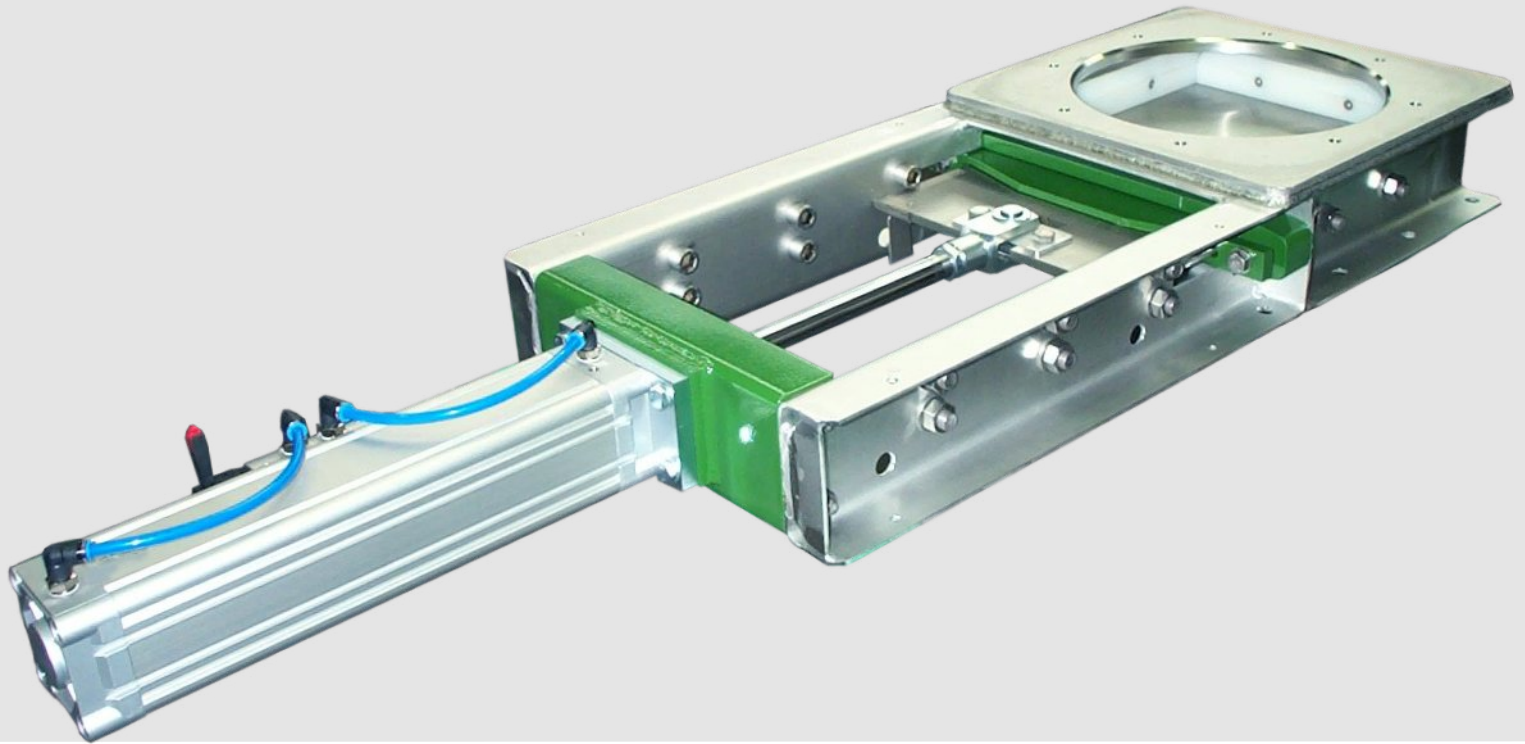


SLIDE VALVES





Pneumatically operated slide valve in stainless steel

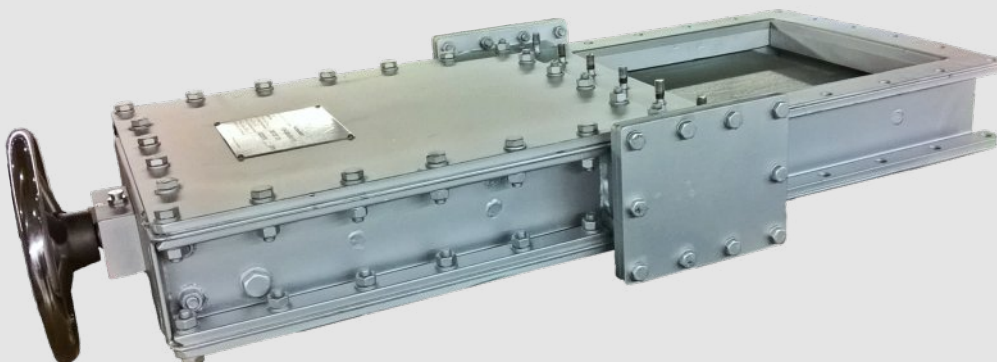
SLIDE VALVES

are important plant elements for handling of bulk materials. They are characterised by effective sealing, high operational safety and favourable geometry of the inlet section.

Flat slide valves are made for powders as well as for fine-grained and coarse grained granulate materials. At the slide blade passages, all flat slide valves are equipped with an adjustable and full perimeter stuffing box, which guarantees a lasting dust density outward.

The slide blade surface is ground to avoid material caking.

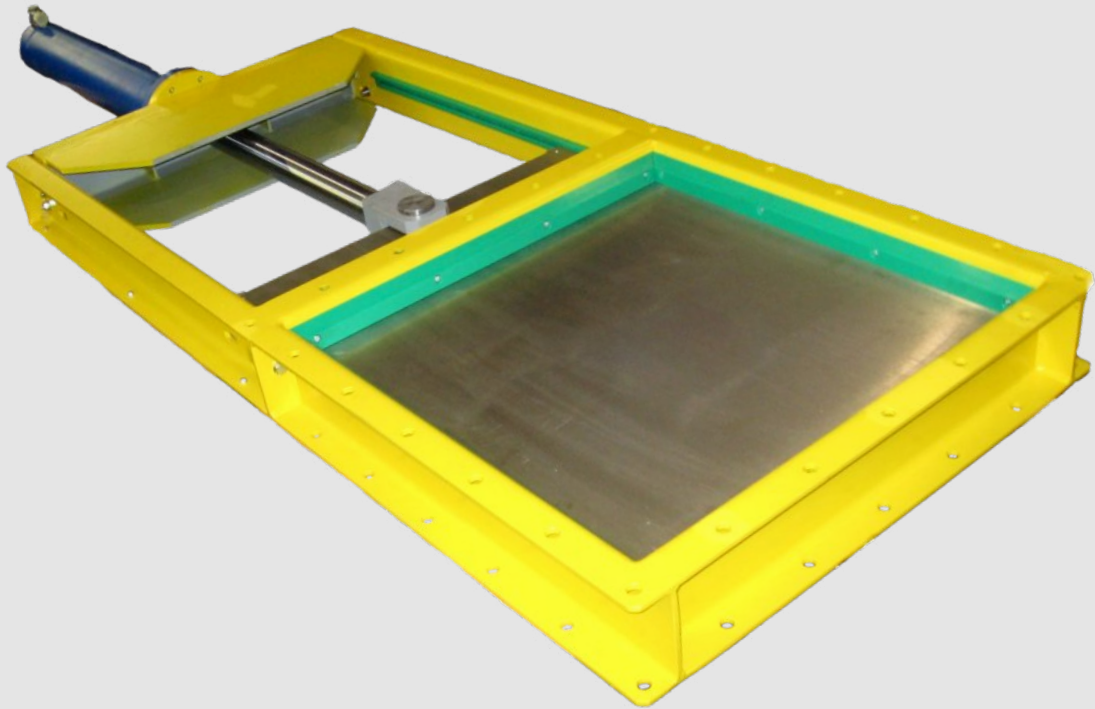
- ▲ Robust, welded design
- ▲ Standard series 100 x 100 to 1.000 x 1.000, other dimensions and flange pictures on request
- ▲ Full perimeter, dust-tight stuffing box seal
- ▲ Modular drive concept
- ▲ Sainless steel blade with ground surface
- ▲ Blade guide on steel bolts or plastic rollers
- ▲ Maximum operational safety also in case of rare use



Flat slide valve - gastight



Slide valve with handwheel

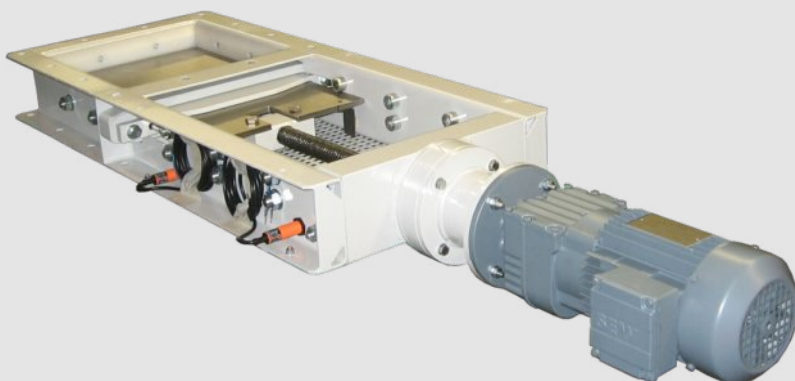


Slide valve with hydraulic cylinder

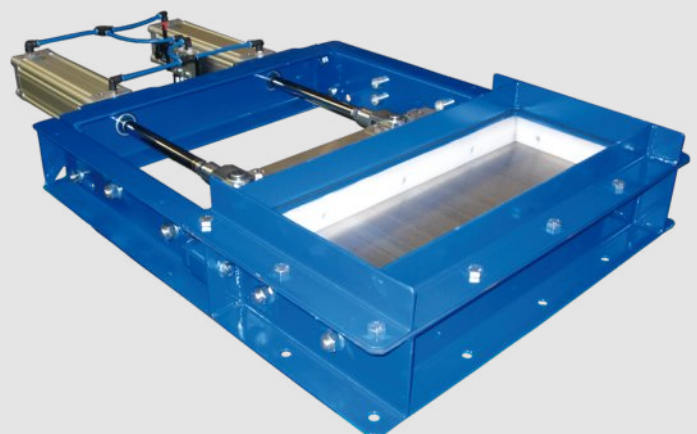
MODULAR DRIVE CONCEPT

Depending on use and switch frequency, different driving mechanisms are necessary. The modular drive concept of the flat slide valves enables flexible integration in all plants, also in explosion-risk areas. It plays no role whether the operation occurs only sporadically by hand or automatically with a number of working cycles .

- ▲ Hand wheel, hand crank, sprocket, pneumatic/ hydraulic cylinder, motor-drives
- ▲ Position indication by proximity switches or continuous way measuring system
- ▲ Quick servicing by possibility of adjustment from outside without need to open the casing
- ▲ Dust-tight and gasproof design outwards
- ▲ Product-optimised inlet section



Gear motor driven




Valve with double pneumatic cylinder



Design:

All components of the **WUTRA** delivery range were calculated and modified by our by out experienced staff. Using special design tools, developed in-house, assures a safe and proper operation for each single **WUTRA** unit.

Certifications:

- ▲ Quality management system ISO 9001:2015
- ▲ Certification according Atex - Directive 2014/34/EU 
- ▲ EAC certificate for customs union
- ▲ Welding certificate EN 1090
- ▲ Pressure equipment directive 2014/68/EU

Service:

WUTRA components can be installed and putted into operation worldwide. Please call our experienced technicians for regular inspections and service.

Research and development:

A permanent development guarantees always a high state of the art level of **WUTRA** products.

The latest scientific knowledge, based on a close cooperation with approved research institutes, will be integrated in engineering and design of our conveying equipment.

WUTRA components:

Screw conveyors
Process screws
Mixer
Bucket elevators
Trough chain conveyors
Slide valves
Way distributors
Rotary valves
Contract manufacturing
Assembly/ Service

Plant construction for:

Soda, Potash industries
Building materials
Raw materials/ Minerals
Chemistry
Recycling
Food
Synthetics
Sugar industry
Power industry



WUTRA Fördertechnik GmbH

Industriestraße 4-6
D-04808 Wurzen

Phone +49 (0) 34 25 - 81 98 - 0

Fax +49 (0) 34 25 - 81 98 - 11

mail info@wutra.de

www.wutra.de